



Living Every Moment with Care, Comfort and Hope



Rhodes Family 'Blessed' by Kline House Experience

Joyce Rhodes's husband Edmond spent only a short time at Kline House before he passed, but it was long enough for her to be thoroughly impressed and deeply grateful for Hospice's compassionate care.

"I can't say enough good things about our experience," she says. "I just want others to know so that they can have the same opportunity during a difficult time."

Edmond's decision to enter hospice care at Kline House, she says, was actually the result of an answered prayer.

"Edmond had been admitted to Holy Cross Hospital, and it was clear that he was in decline. We had the opportunity to bring him home, and our family discussed it, but knew we wouldn't be able to provide him with the level of care he needed. I prayed and prayed that night, and in the morning, when I woke up, I saw the words 'Kline House' on my bedroom wall. I wasn't sure what it was, but we looked it up."

continued on page 2



STAY CONNECTED

Follow, Like and Share
Frederick Health Hospice on Facebook



Korey Cobb

Frederick Health Hospice
and Palliative Care Director

Board of Directors

John Verbus

Board President

Arthur Anderson

Board Vice President

Shane Weeks

Board Secretary

Allison Zerr

Board Treasurer

Alison Bomba, Psy.D.

Douglas Brown, PA-C

Laurel Cucchi

Tejal Gandhi

Darrell Guyton

Bill Haugh

Heather Kirby

Thomas Kleinhanzl

Patrick Mansky, MD

Rev. Timothy May

Charles J. Smith, III

Steven Stoyke

Dan Tipsord

After learning about Kline House and what it offered, Joyce and Edmond confirmed that they were ready to commit to hospice, and made the referral call. By noon, arrangements had been made for Edmond's transport the next day.

"I had thought that there would be a lot of follow-up and organization needed from me," she says. "The Kline House staff handled everything and took away all my stress."

Once Edmond was settled at Kline House, they found that the nursing and facility staff were like "angels" who "treated them like family." "They knew what his needs were before he even articulated them," Joyce says. "His care was perfect."

They also found Kline House itself to be incredibly peaceful and comforting given the circumstances. "It's immaculate and beautifully decorated," Joyce says. As a musician herself, she also appreciated the music comfort volunteers who came to sing and play guitar in the living room.

Particularly important and meaningful was the fact that Joyce and the rest of the Rhodes family – their two sons – were able to stay with Edmond around the clock. Having run the family construction business together for 40+ years, Edmond and his sons were very close.

"There was never any question or worry about whether we could stay," Joyce says. "It meant the world to us to be able to have that last time with him in peace, while all of our other needs were completely taken care of."

Joyce is grateful that such a peaceful and secure environment, most importantly, was able to put Edmond more at rest through the final days of his life. "He was ready," she says. "And no one was worried about managing his care – we just got to be with him."

After not quite a week at Kline House, Edmond, 88, passed away peacefully on February 25th. Death and grief are always a challenge, but Joyce and her family could not feel more "blessed" by how they were able to say goodbye. "The experience and support at Kline House," she says, "is the best a person can ask for."



Honored to Serve Our Community

A Message from Director, Korey Cobb

Pictured at left: Former Hospice Director, and current Board Member, Laurel Cucchi, with me. Laurel has been instrumental in guiding me in my new role. Her rich history with hospice inspires me in my daily life.

I am honored to introduce myself as the new Director of Hospice and Palliative Care. With over a decade of senior leadership experience in healthcare operations, I view hospice as a powerful intersection of medical excellence, human connection, and community impact. What drew me to this role is deeply personal. Almost a year ago, my grandfather, a proud veteran who served his country in many ways, entered hospice care in another state. Unfortunately, the care he received fell short of what every patient and family deserve, creating additional grief for my family during an already difficult time. Stepping into this role feels like a calling to ensure that no family in our community ever has to experience what mine did. My hope is to leave a legacy my grandfather, my family, and our community would be proud of.

I am fortunate to join an organization with a long-standing history of providing exceptional and compassionate care. Our team is the heart of this work, and I feel a profound sense of gratitude to lead such dedicated professionals who embody the highest expectations of hospice quality care, combining clinical excellence with deep compassion. From skilled nurses and physicians to social workers, chaplains, aides, and volunteers, every staff member is committed to prioritizing patient comfort and dignity. In my first months, I have met with community partners and donors, listened to families, and identified opportunities to strengthen and expand our services so that we can continue to meet the evolving needs of those we serve.

My vision for the next year is to ensure that everyone has access to this exceptional level of care while building sustainability during a changing economic climate. This includes expanding outreach to underserved populations, enhancing caregiver resources, and strengthening local partnerships to create a network of support that reaches every corner of our community. I look forward to meeting with our many donors whose support makes it possible to shape hospice's bright future.

Hospice and palliative care is a community-supported mission, and I invite you to keep sharing our message and have meaningful conversations with your loved ones about care planning. Together, we can make our community a place where every person, regardless of age, illness, or circumstance, has access to the highest quality hospice and palliative care.

A Year of Sharing our Mission

It has been one year since we opened our Montgomery County office—and what a meaningful year it has been. We are privileged to serve patients and families throughout Montgomery County with compassionate end-of-life care.

We're grateful to the Greater Rockville Chamber of Commerce for helping us celebrate with a ribbon cutting, and honored by the presence of the Mayor of Rockville, along with leadership from the Chamber and Adventist HealthCare Shady Grove Medical Center.

Thank you for the warm welcome and continued support as we grow our mission to provide expert hospice care and grief support services in Montgomery County.



In Memoriam

We are grateful to the individuals and families who designated contributions to Frederick Health Hospice in memory of their loved ones who are listed below:

James E. Baker
Merrilyn C. Barney
Kirk B. Bowers
Bruce T. Bowman
Henzo T. Bozzonetti
Francis Willson Bush
Richard N. Coats
Sadie Lee Cullen
Dennis M. Engel
Maria T. Festa
Louis E. Follin
Bettye B. Hamlin
Donna L. Hargett

Garry P. Haywood
Delphine T. Koval
Doris R. "Becky" Lach
Andrew V. Mackintosh Sr.
Barbara F. Massey
Joseph R. McIntyre Jr.
Robert J. Murray
Claudette L. Pare
Mary M. Pearl
Ann L. Pearre
Charlene "Charlie" Perry
George J. Podd
Bruce B. Rieser

Marie Lucia Roe
Grace E. Schroyer
Ronald G. Schwedes
Lester C. Simmons Sr.
Leo L. Shank
Ruth L. Spring
Mildred L. Stang
Betty Jean Swomley
Dorothy E. Wachter
George H. Waxter
Eva Jeannine Wheeler



Renewing Comfort at the Kline House

This summer, the Kline House, now twenty-three years old, underwent much needed renovations to create an even more comforting space for patients and families. A beautiful new deck was built off patient rooms, offering fresh air and peaceful views. Inside, bright new paint, fresh flooring, and updated kitchen cabinets bring warmth and renewal to every corner. Board members and staff rolled up their sleeves, working side-by-side to power clean and prepare the house for its next chapter.

“I want to take a moment to sincerely thank all of our staff members, board members, and volunteers who came out to help with the Kline House update day,” says Hospice Director Korey Cobb. “It was truly incredible to witness so many of you working side by side, united in purpose and service.”

These improvements are more than cosmetic—they reflect our shared commitment to all who spend time in this special place of care and peace. We are grateful to our community whose generous supports made these renovations possible.





Ruth Ann Engel and her favorite people doing her favorite thing—cheering on the Orioles at Camden Yards. These special moments remind us of the joy she found in family, baseball, and simply being together.

In Loving Memory of Ruth Ann Engel, With Heartfelt Gratitude

Dear Hospice Staff,

Thank you so much for the care provided to our mom and mamaw, Ruth Ann Engel. From the initial meeting to her final day, everyone we encountered at Hospice was truly wonderful. A special thank you to Ari and April. We were so blessed to have both of them caring for us. They showed so much kindness and compassion while providing the best care to Mom.

There are truly not enough words to express how grateful we are for Hospice. Please accept our donation as an expression of our gratitude.

*Thank you,
The Kreimer and Engel Families*

Veteran Liaison Bob Lebron recently honored John Cooper.

Now 100, John was aircrew on B-17s and later B-29 bombers during WW2. By the time his training was complete (he was a gunner) the war was winding down. The US Army Air Corps eventually became the US Air Force. Hospice is so grateful to be able to recognize our veterans for their service.



Volunteer End of Life Doula Program Provides Intensive Transition Support

Most people are familiar with doulas who support mothers during the intensive process of birth – but few may consider that death is a transition just as worthy of that guidance and support, as well. Hospice’s volunteer end of life doula program, launched earlier this year, aims to provide trained comforters to be specially present during patients’ final hours.

Dianne Elizabeth, Hospice’s Volunteer Services Coordinator, explains that the doula serves in a variety of ways, but all are centered around being that critical calming presence. Volunteer doulas – who are trained by hospice staff before assignment – can provide breaks for fatigued families, spiritual and emotional support for patients, or reach out to other hospice team members (e.g. nurses, chaplains) if necessary. Doulas learn how to talk to family members about the physical dying process and what to look for as it progresses.

One of these volunteers, Leslie Strongwater, has taken this work a step further, as a doula with professional training and certification. She describes the role of the doula as one who “turns towards” patients and families in this time of intensity and who “provides emotional support, a non-judgmental presence, and compassionate care during the most complex transitions at the end of life.”

“Imagine,” she explains further, “an actively dying patient whose closest relative lives 900 miles away. If a local doula can get there, to hold their hand, to let them know they are not alone, to help support the family from afar, by being that compassionate and connective presence, that feels like true service.”

The volunteer end of life doula program is one more tool Hospice has developed to facilitate patients’ deaths with dignity, comfort, and peace.



Coping with the Holidays Workshops

Tuesday, November 4, 5:30–7:30 PM
or Friday, November 14, 1:30–3:30 PM
1 Frederick Health Way, Frederick, MD 21701



This two-hour workshop will explore some practical ideas to help cope with the upcoming holidays, as well as some ways to commemorate your loved ones, especially throughout the holidays. This time of year can be very stressful under the best of circumstances, and more so if you are facing the holidays after the death of a loved one.

If interested, please register for ONE of the workshops online at frederickhealthspice.org, call 240-566-3030 or email us at griefsupport@frederick.health. For Coping with the Holidays Workshops in Montgomery County, please email or call to register.

A Lasting Tribute of Love

Family members often support hospice by donating a commemorative engraved tile for the Kline House Memorial Wall to honor and remember loved ones in a lasting way. Each tile becomes a personal tribute—that helps carry on the memory of someone who received compassionate end-of-life care at Kline House.

These tiles are not just markers—they are symbols of connection. They give families and friends a place to return reflect and find peace. Whether it's to celebrate a life well lived, or simply to say "I remember," each engraved tile tells a unique story—and together, they form a powerful mosaic of love, loss, and legacy.

Purchasing a tile also supports our Kline House. Contributions help ensure that others in the community can receive the same quality, dignified care regardless of their ability to pay. It's a way to give back, pay it forward, and help sustain a place that means so much to so many.

Learn more about our tiles at frederickhealthspice.org/kline-hospice-house/memorial-wall/.



Carol Norris, Good Samaritan Circle of Life donor, memorialized her daughter "Franki" with a tile.



Annual Community Remembrance Service

**Thursday, Dec. 4, 2025
at 7:00 PM**

**Monocacy Valley Church
9861 Old National Pike, Ijamsville, MD 21754**

Anyone who has experienced the loss of a loved one and wishes to commemorate their life during an evening of music, candlelight, and personal reflection is warmly invited to attend this special evening. We welcome the families of those we have served, as well as those in the community who have lost a loved one.

Part of the Remembrance Service includes a photomontage to commemorate our loved ones we have lost.

If you wish to participate in the photomontage, please email this completed form and a photo of your loved one to griefsupport@frederick.health by November 21, 2025 or mail to:

Frederick Health Hospice
ATTN: Grief Support
1 Frederick Health Way
Frederick, MD 21701

Please include a self-addressed, stamped envelope if you would like to have your photo returned.

Your Name _____ Phone _____

Name of Person in Your Photograph _____

Relationship to You _____

Date of Birth (Month, Day, Year) _____

Date of Death (Month, Day, Year) _____

List up to Five Things Your Loved One Enjoyed (For Example: Fishing, Baking, Dogs, Traveling)

Your Gift Matters

New Director Korey Cobb had a chance to meet Dan and Susan Tipsord, Hospice Good Samaritans - Miller Society, at the annual Good Samaritan of The Year celebration. Dan is also a Hospice Board Member. The Tipsords' daughter Christine was diagnosed with a brain tumor at a very young age and passed away at Kline Hospice House surrounded by her family. They later established Project Christine in memory of their daughter. We are so grateful for the Tipsords and all of our Hospice donors.



☐ **Yes, I want to make a tax-deductible gift to Frederick Health Hospice.**

Name _____

Address _____

City _____ State _____ Zip _____ Phone _____

Email _____

Donation Gift Amount ☐ \$500 ☐ \$250 ☐ \$100 ☐ \$50 ☐ \$25 ☐ Other _____

My gift is in memory of _____

My gift is in honor of _____

Please acknowledge my gift to:

Name _____

Address _____

City _____ State _____ Zip _____ Phone _____

Hospice will send a card to the family you designate, acknowledging your gift made in their name or in the memory of their loved one. No reference will be made to the amount of your gift.

☐ Check enclosed (Please make your check payable to Frederick Health Hospice)

☐ Visa ☐ MasterCard ☐ American Express ☐ Discover Card # _____

Expiration Date _____ Security Code _____ Signature _____

To make a gift online, go to frederickhealthhospice.org/donate.



Your gift to Frederick Health Hospice is deeply appreciated.

1 Frederick Health Way | Frederick, MD 21701

Scan here to
make a gift
today





Community Grief Support Resources

Join Us for The Bucket List Book Club

Held Monthly, 2:00 PM - 4:00 PM

Frederick Health Village

1 Frederick Health Way, Frederick MD 21702

(use West Entrance)

in partnership with



The grief support team hosts several support groups, workshops, and events throughout the year available in Frederick and Montgomery Counties. These are for adults only and are usually held in-person.

If you are looking for a support group for a specific type of loss, please contact us about your needs. Call 240-566-3030 or email griefsupport@frederick.health. There is no charge for these events.

We also regularly update our website with upcoming groups and events: frederickhealthhospice.org/grief-loss/support-groups-workshops/

Camp Jamie Teen Grief Retreat (Grades 9-12)

Saturday, November 8, 2025

Thorpewood

Thurmont, MD

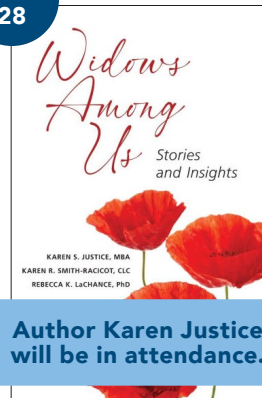
Annual Remembrance Service (see page 9)

Thursday, December 4, 2025 at 7:00 PM

Monocacy Valley Church

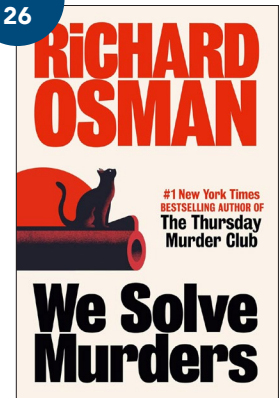
9861 Old National Pike, Ijamsville, MD 21754

SEPT.
28

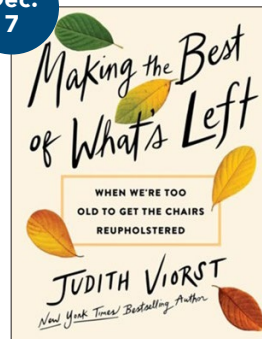


Author Karen Justice
will be in attendance.

OCT.
26



Dec.
7



Stay up-to-date
with our Bucket
List Book Club!
Scan for details.



Reading the
book is not
required to
attend!

frederickhealthhospice.org

1 Frederick Health Way | Frederick, MD 21701 | ph 240-566-3030

Has your address changed? Or would you prefer to get the online version of this newsletter? Email pjsmith@frederick.health



See recent updates to The Kline House on page 5 and on Facebook and Instagram.



Wish List

Kline Hospice House

- Gift cards (Walmart, Food Lion, Amazon)
- For links to specific items needed, visit our Amazon Wish List. You can donate by having items shipped directly to our Kline House through Amazon or you can drop them off to our office Monday - Friday, between 8:00 AM - 4:30 PM.

Find our Amazon Wish List at frederickhealthhospice.org/wishlist

Support Hospice with a Meaningful Bracelet

100% of the profits from the sale of this beautiful Em(brace)let will go directly to support Frederick Health Hospice. This Em(brace)let is a lovely way to honor a loved one or friend and also makes the perfect gift for someone special. Purchase online or in person at the Colonial Jewelers store located at 1 South Market Street in downtown Frederick.

Makes a great gift!

